

Comparative analysis of Student feedback

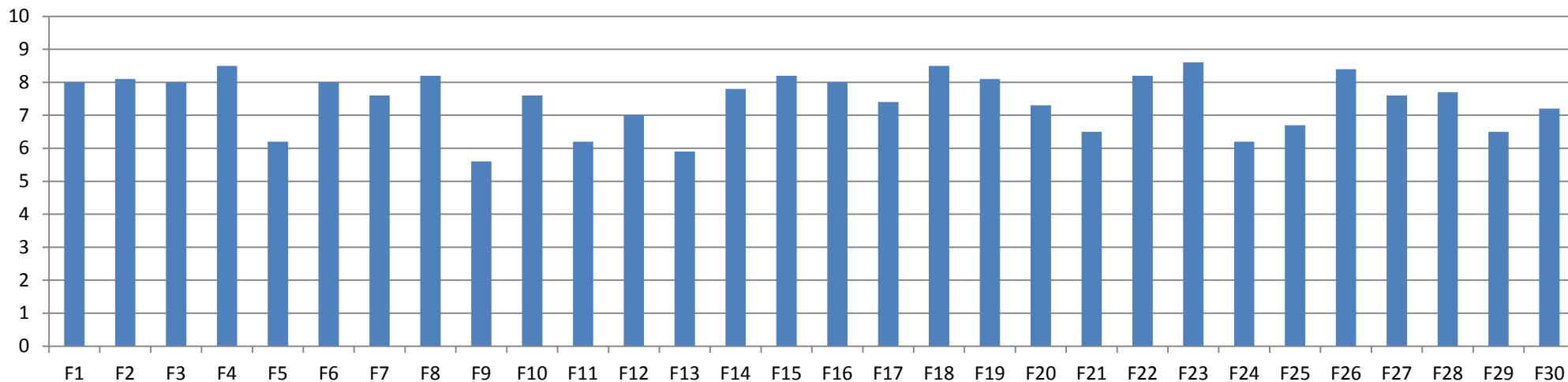
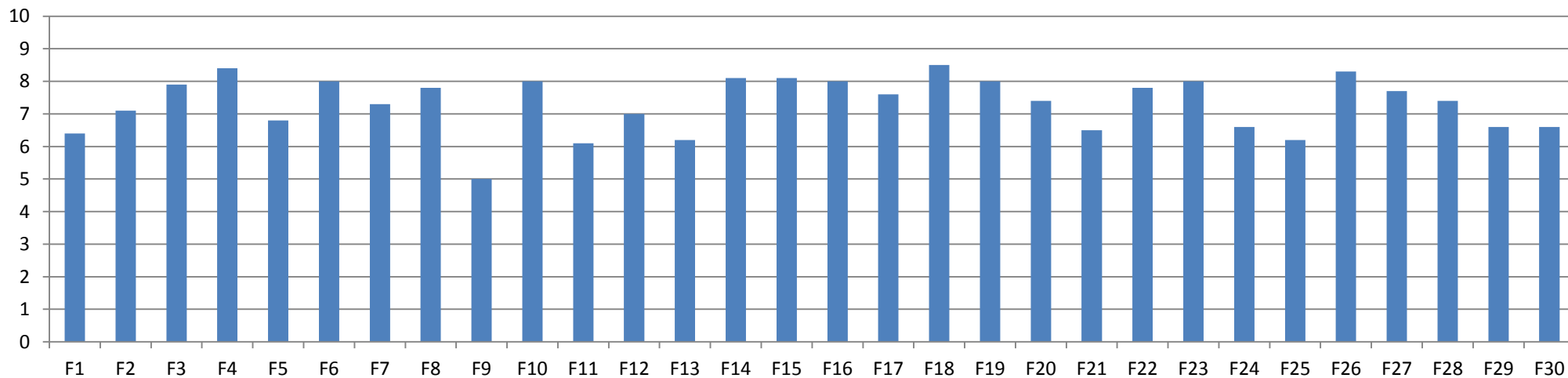
Feedback from Students for Teaching faculty

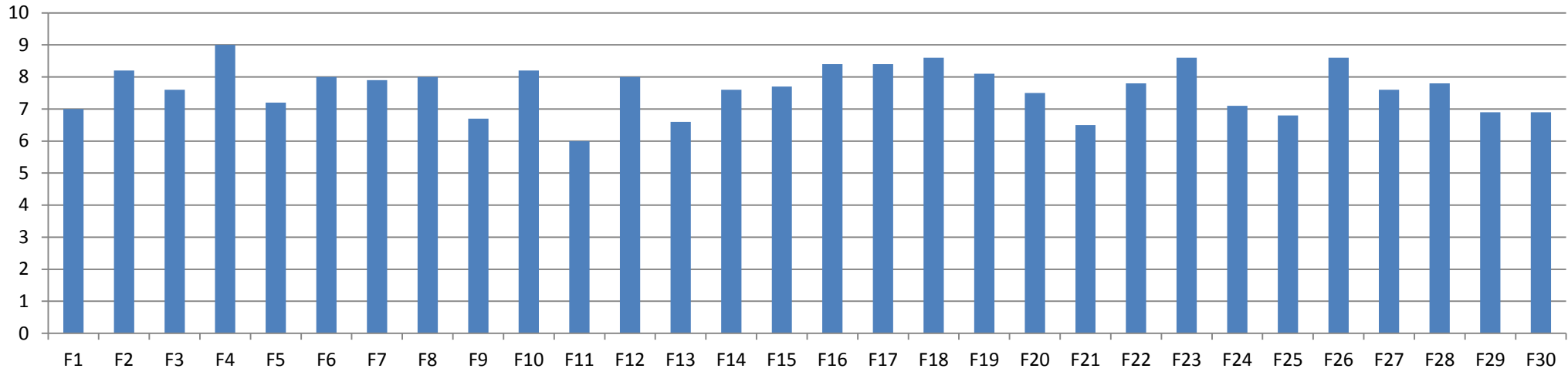
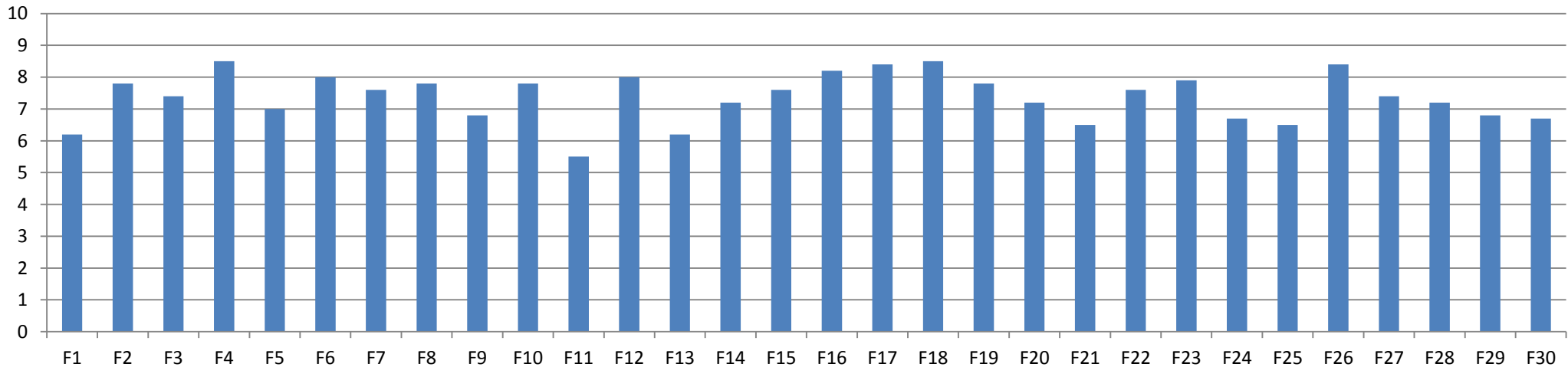
Students of each year give detail feedback regarding teaching quality, studio behavior, content delivery etc, regarding every faculty of every subject which is tabulated & analyzed by senior faculty from Academic Monitoring Committee. A comprehensive tabulated copy of the student feedback is handed over to the faculty during their appraisal review. Every student gives a rating between 1 to 10 for every faculty member by answering following set of questions:

1. Explained the CONTENT of the SUBJECT in a manner that was UNDERSTOOD EASILY by you
2. Planned his/her subject in a systematic manner
3. Showed willingness to OFFER STUDENTS HELP AND ADVICE
4. WAS AVAILABLE to you when you needed assistance
5. Provided a feedback that GAVE YOU DIRECTION for improvement
6. MOTIVATED you to do better
7. Was POLITE in his/her BEHAVIOUR in the class / studio
8. Maintained a CHARGED LEARNING ATMOSPHERE in the class / studio
9. WAS PARTIAL in marking or assessments of the assignments / submission

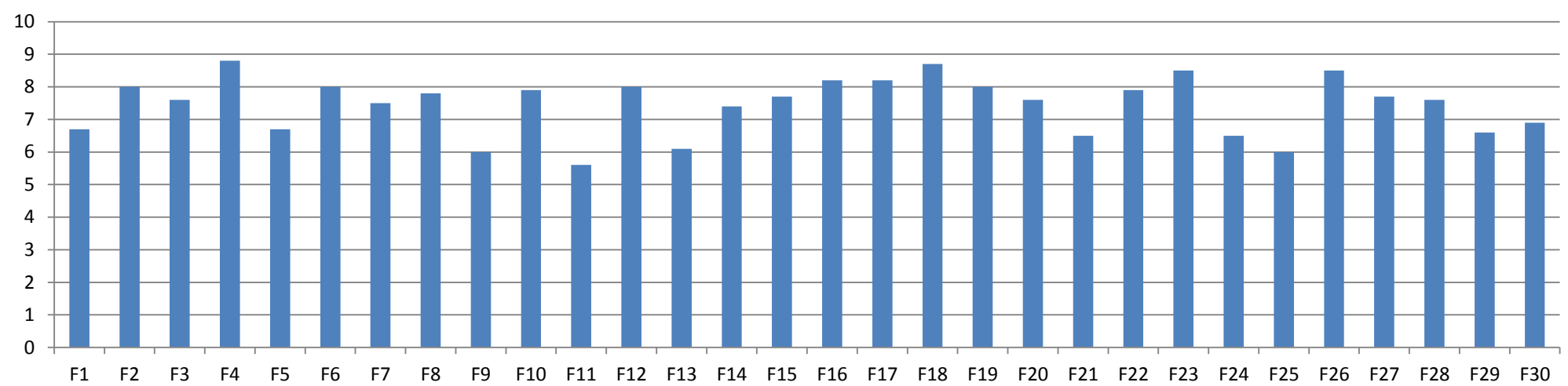
Consecutive analysis graphs shared for Academic year 2023-24 shows that , average points of all faculty members go beyond 7.3 out of 10 for all the questions while for last question where lower marks indicate higher value, average marks are 5 out of 10.

In all graphs, F denotes faculty members on X axis while marks out of 10 are indicated on Y axis.

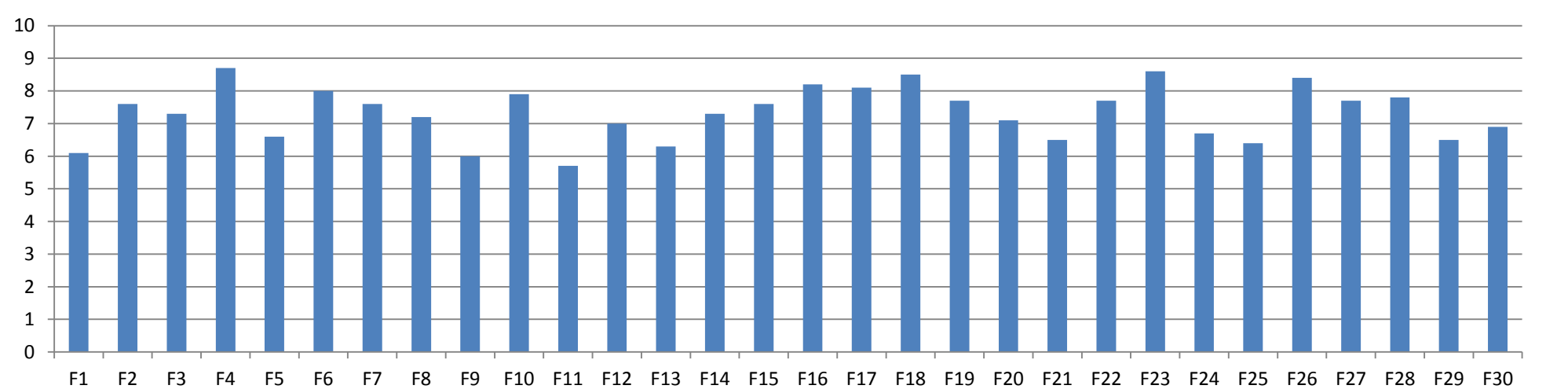
Q1) Explained the CONTENT of the SUBJECT in a manner that was UNDERSTOOD EASILY by you – Avg Score - 7.5/10**Q2) Planned his/her subject in a systematic manner- Avg Score = 7.3/10**

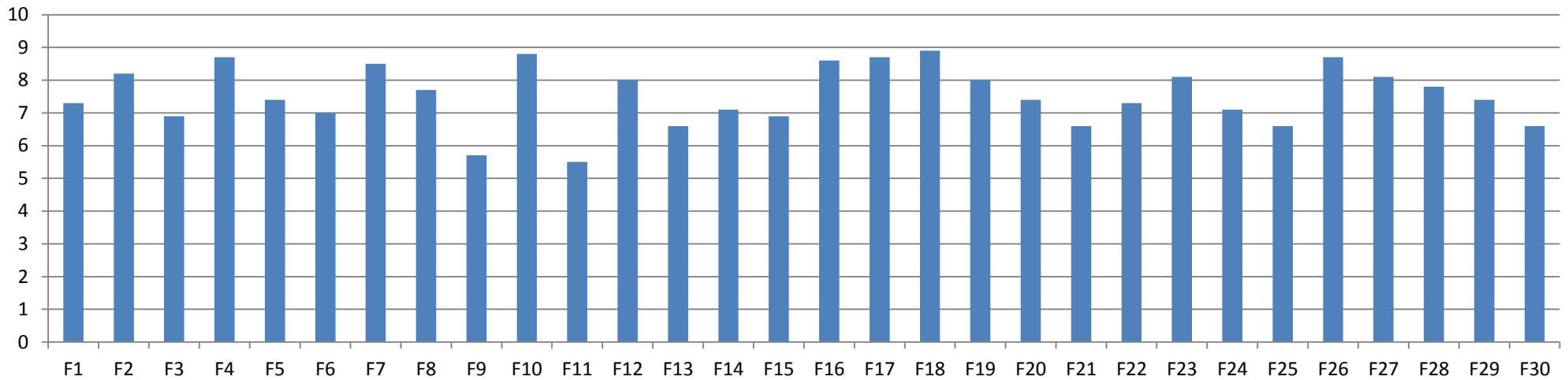
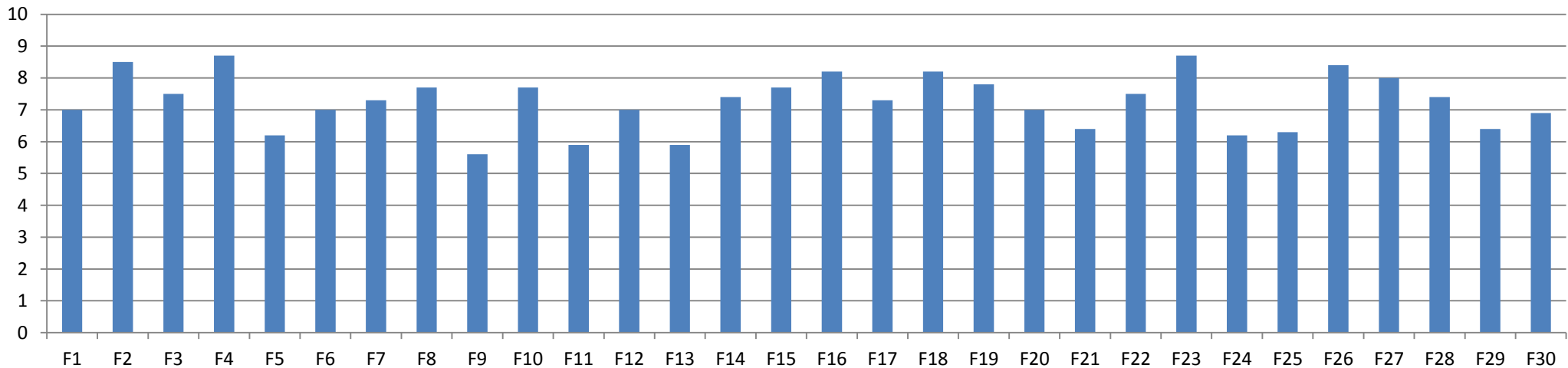
Q3) Showed willingness to OFFER STUDENTS HELP AND ADVICE - Avg score = 7.6/10**Q4) WAS AVAILABLE to you when you needed assistance – Avg score = 7.4/10**

Q5) Provided a feedback that GAVE YOU DIRECTION for improvement - Avg Score = 7.4/10



Q6) MOTIVATED you to do better – Avg Score = 7.3/10



Q7) Was POLITE in his/her BEHAVIOUR in the class / studio - Avg Score =7.5/10**Q8) Maintained a CHARGED LEARNING ATMOSPHERE in the class / studio - Avg Score = 7.3/10**

Q9) WAS PARTIAL in marking or assessments of the assignments / submission – Avg Score = 5.0/10

